

Open House

House of LeBeija

54 Newton Ave, Phoenicia, NY, 12464

By Appointment Only

5 miles from Phoenicia	2 bedrooms
25 miles from Kingston	2 bathrooms

Offers over

\$ 550,000.00



Close Knit Community

Phoenicia has been long considered a popular vacation destination for New Yorkers, the hamlet has frequented many tourism guides as among the best vacation towns in the greater New York City area. Despite the towns tourist reputation, more and more are moving to the area in search of long lasting retreats.

The population of Phoenicia was 309 at the 2010 census, making it the highest populated community in the town. The village center is located just off Route 28 at its junction with Route 214 and is nestled at the base of three peaks, Mount Tremper, Romer Mountain, and Sheridan Mountain.

Facilities

- Walking distance to Phoenicia town center
- 25 minute drive to Kingston town center
- Unique Colonial architecture with wooden beams
- Two spacious bedrooms
- Beautiful outdoor space

Colonial homes like 56 Newton Ave, Phoenicia are extremely rare - don't miss out on your dream home.



Paula Ward

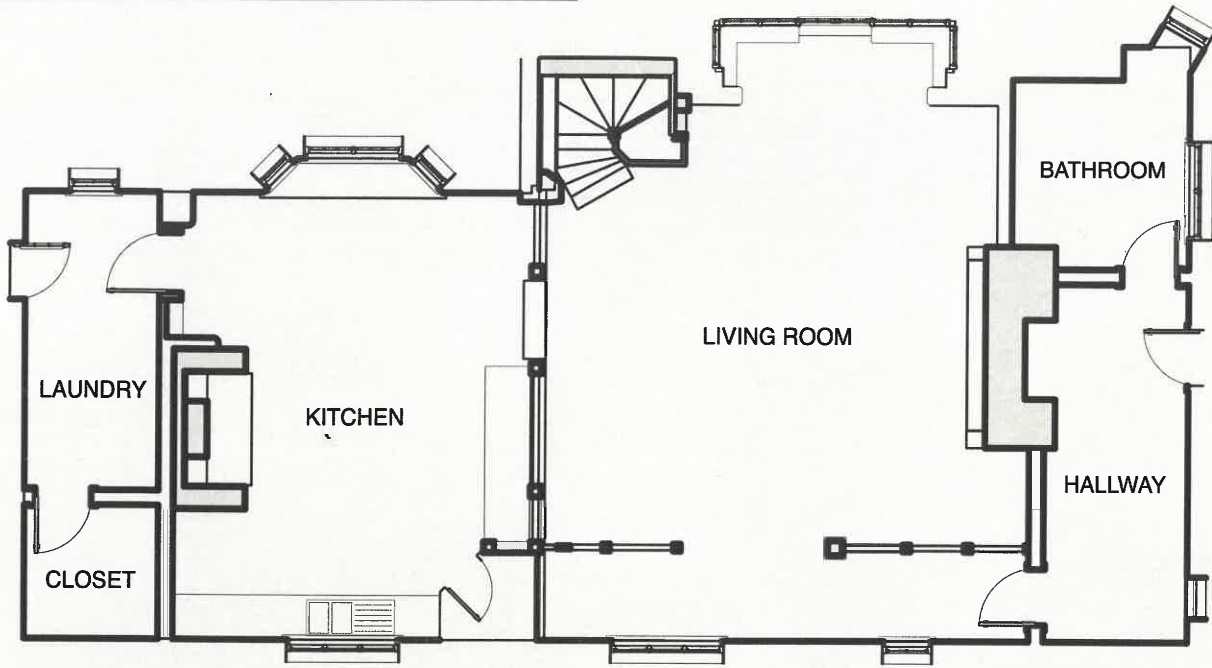
at Roger Stanton Realty

Call 845-555-0187 or visit our website for details

Call Now

845-555-0187

House of LeBeija - Downstairs



House of LeBeija - Upstairs

